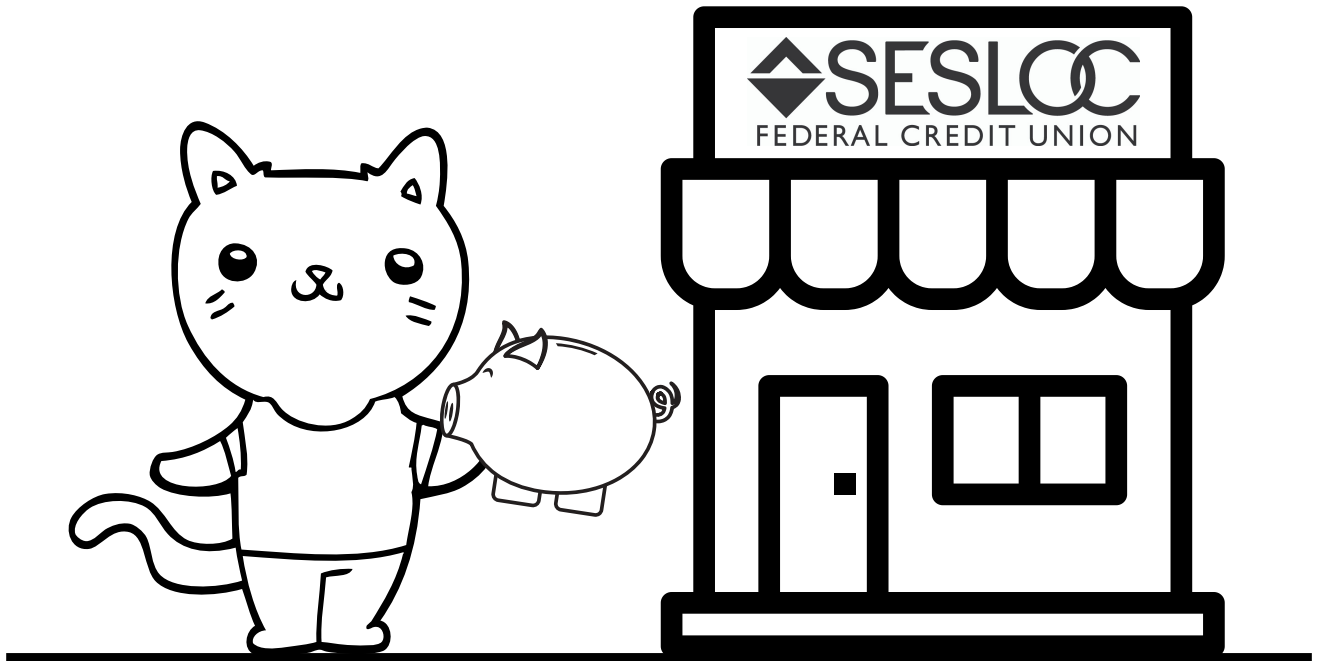


# *Let's Go to the Credit Union*



**Youth Coloring & Activity Book**

# What's a Credit Union?



What is a **credit union**?

It's a **safe** place to keep your money!



You have to **join** a credit union.

It's like a club!

When you join, you become a **member**!



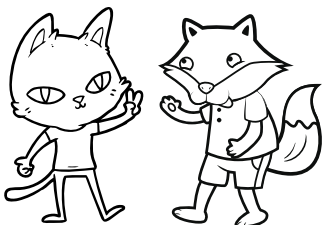
Members **own** their credit union.

Isn't that cool?



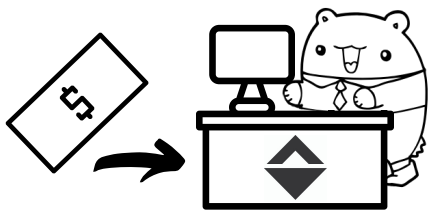
But not everyone can be a member.

SESLOC members must **live, work, or go to school** in San Luis Obispo or Northern Santa Barbara Counties.

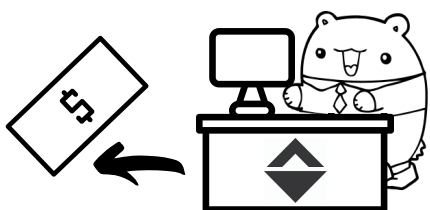


That means all members are a part of **your** community!

# Money Concepts



Members have an **account**. You **deposit** money into your account to **save** it.



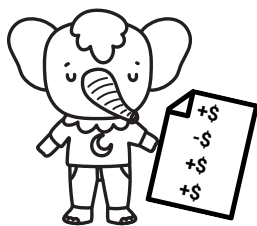
You **withdraw** money from your account when you need to **spend** it.



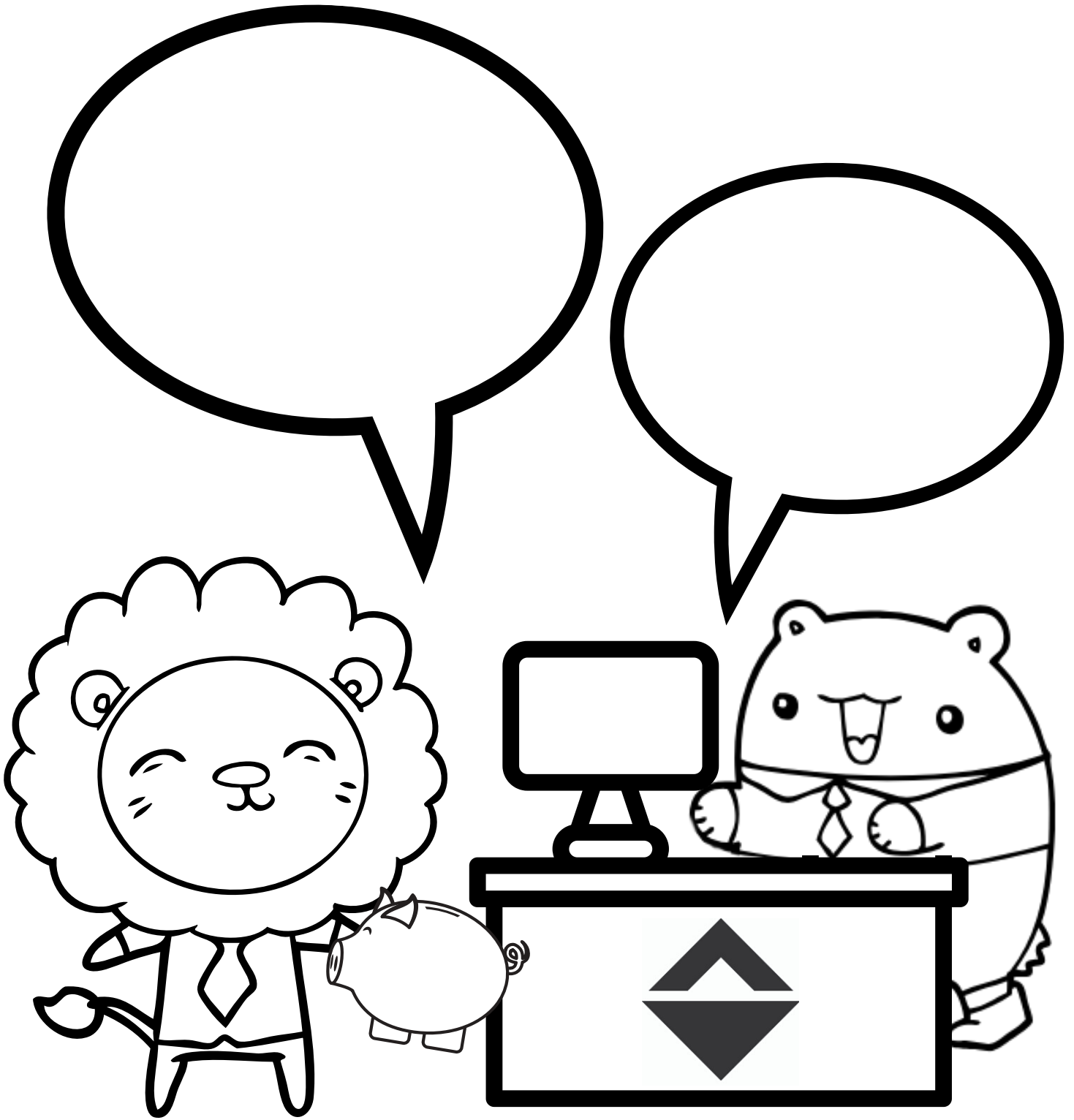
You can deposit or withdraw money at a **branch** or **ATM**.



Your **balance** shows how much money you have in your account. Be careful not to spend more than you have!



You also get a **statement** every month. It shows all of the money you put in your account, or took out to spend.



# Word Search

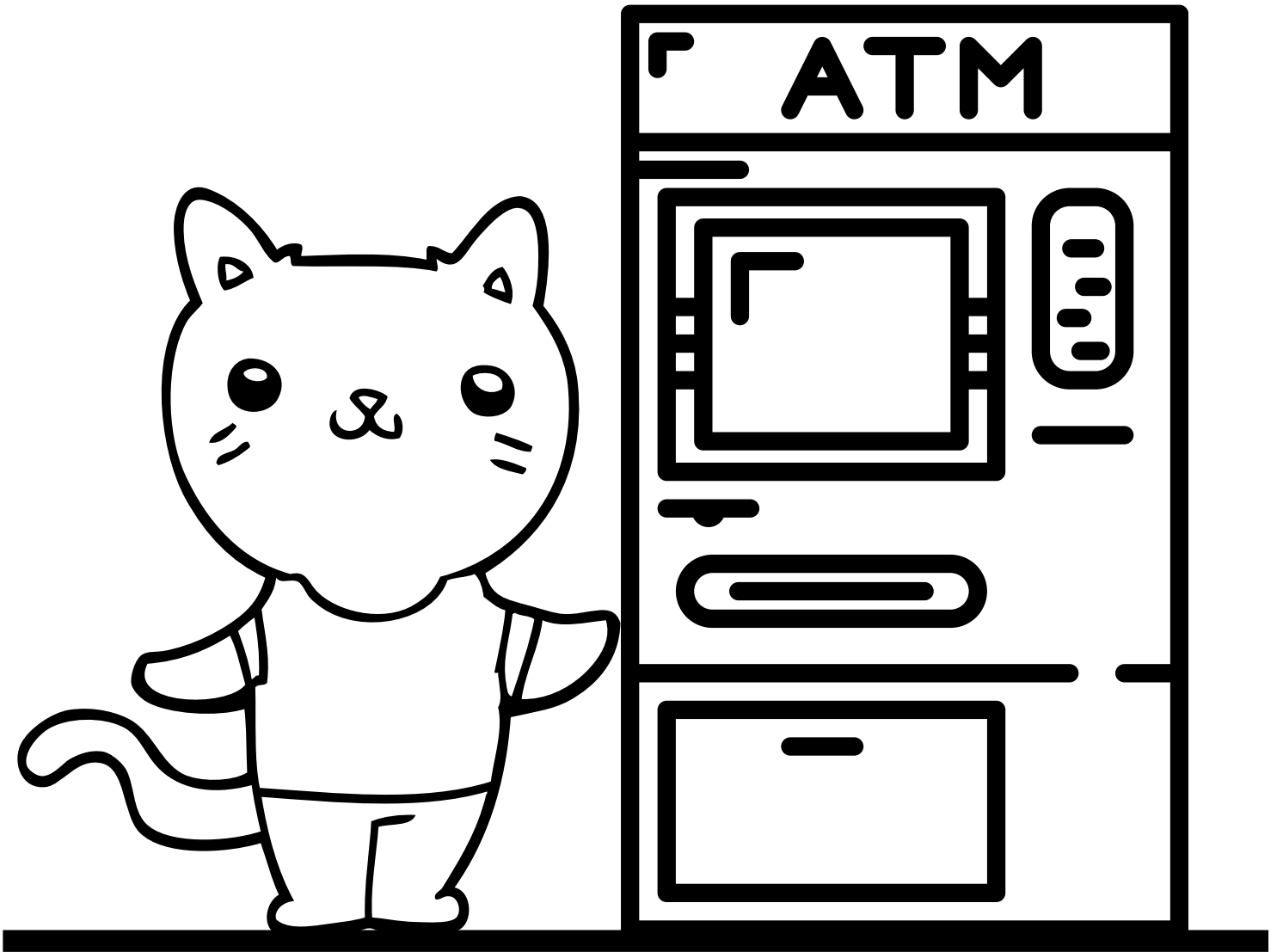
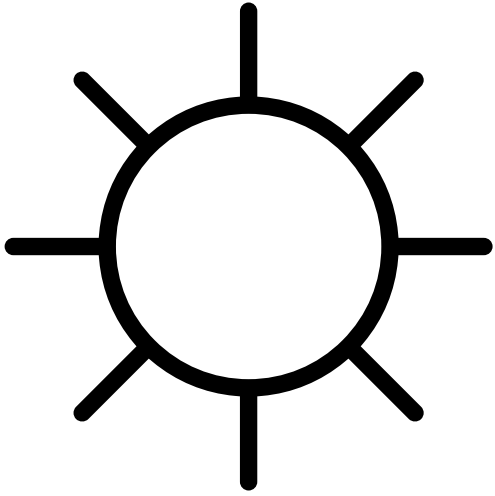
R H O W W D L W  
 V R I B H K Y L I V E V  
 X E K K B S X N R W D D I I Z T  
 A C R V R A I V I P C E N W E F D M H R  
 O P L R F V N H T T S E A A A O P D B Z B E  
 L C O L S E S T N U O C C A H Y G R O K K C I U  
 B W S O F N D E A M C F X X D I Y L K S N Z U T  
 H R P Y B W M I F Y E I Y Y P T Y B Q A I P R Z  
 F Y A S L E S Q T S T W T Q D T M A L C N T V Y  
 Z T L N T K S P S U J N N W I A L A L J A Z G U  
 W T T A C Q S M N F N T U N L A B D R C R F A P  
 B T J C H S Q K L J I U O S U M R E F S Q X  
 S W A R D H T I W C M O L C L T X C H O Q U  
 K W O F E E G U M H Y N Q E X X K G U V  
 Q C D W J U O C V U L S P E N D U D  
 K V R Q C S R N R J L N V J B O  
 H M E M B E R V M Z X B J T  
 M P L N N C Y A I Y M T  
 M R N V J E M P T J  
 O J T Y I Q A V  
 N O L I A M  
 E F T A  
 Y A

ACCOUNT  
 ATM  
 BALANCE  
 BRANCH  
 COMMUNITY

COUNTY  
 CREDIT UNION  
 DEPOSIT  
 LIVE

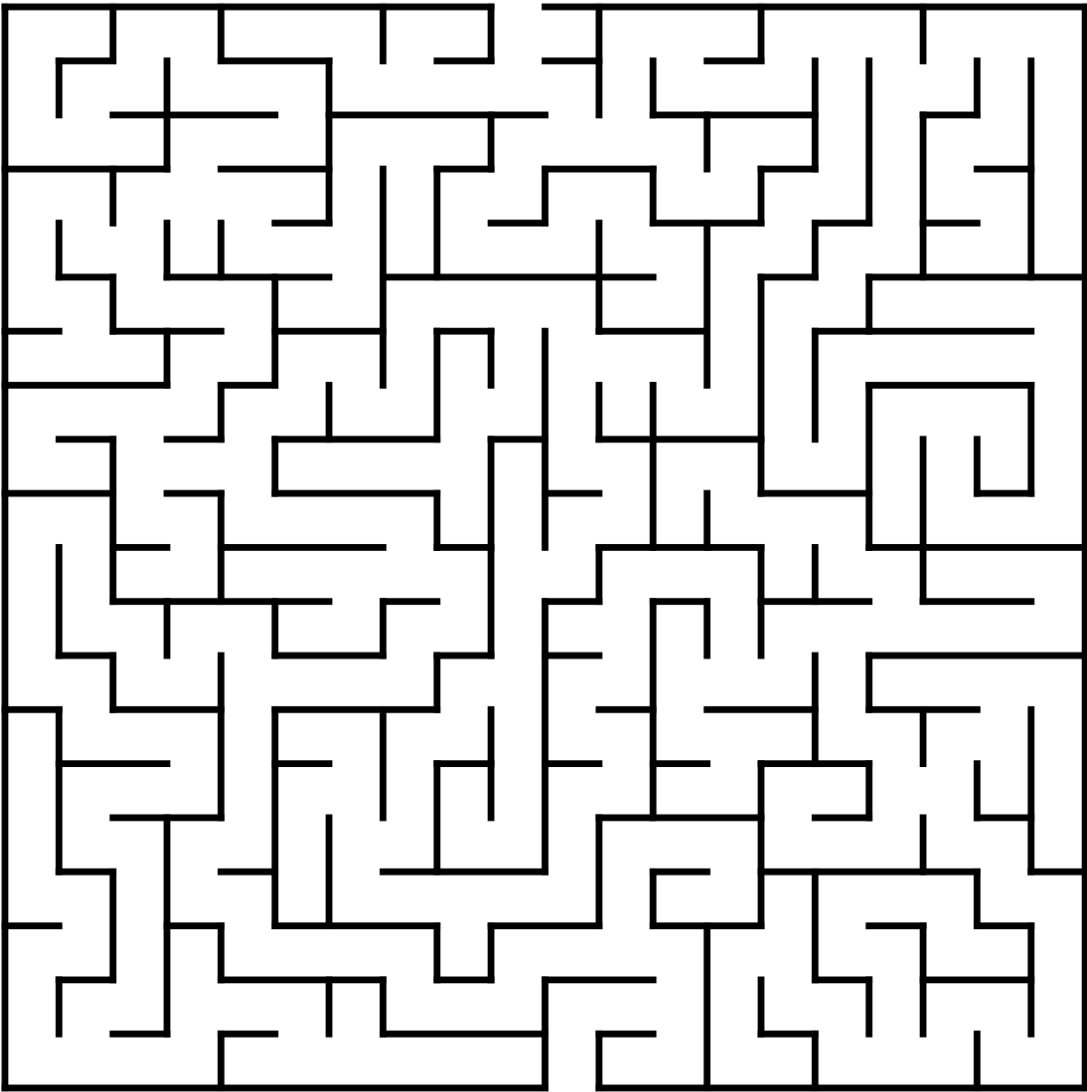
MEMBER  
 MONEY  
 SAVE  
 SCHOOL

SESLOC  
 SPEND  
 STATEMENT  
 WITHDRAW  
 WORK



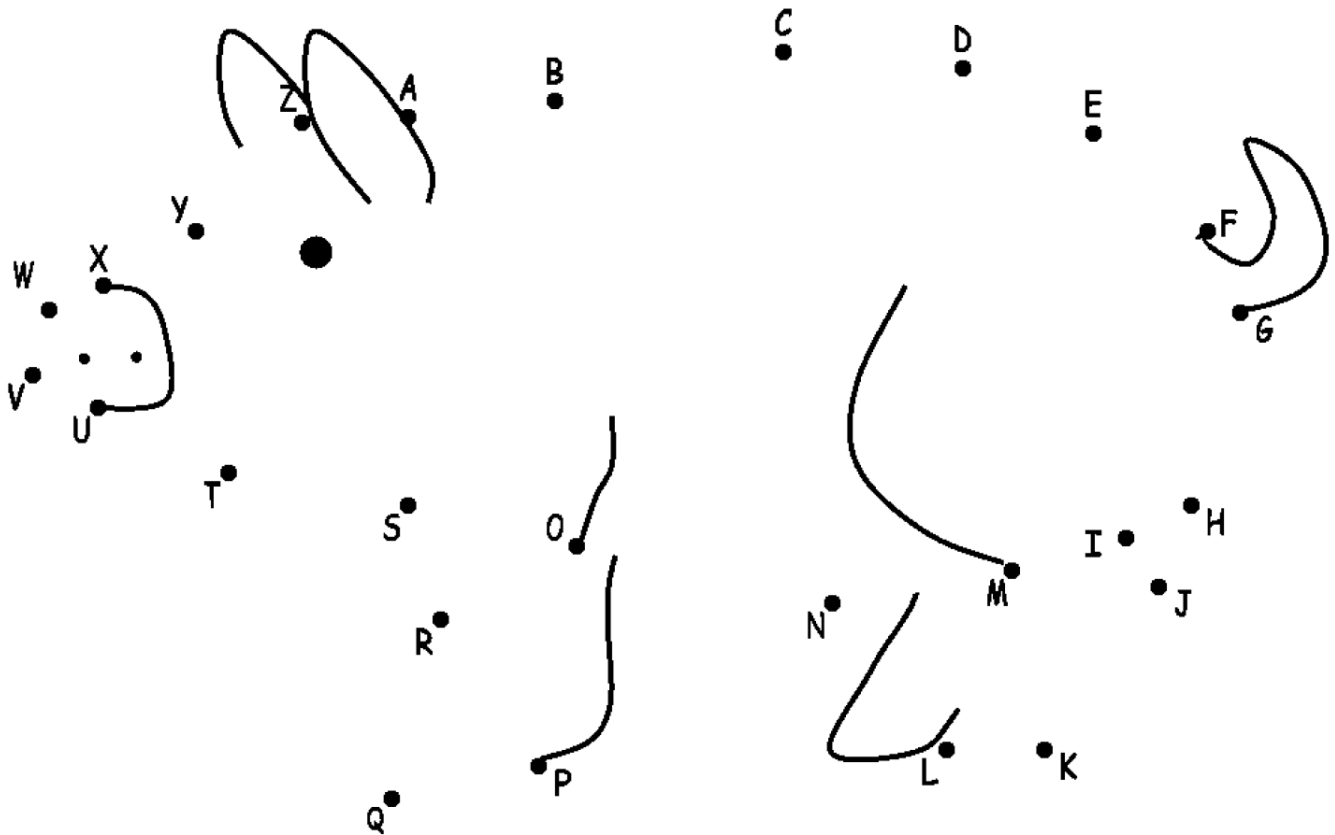
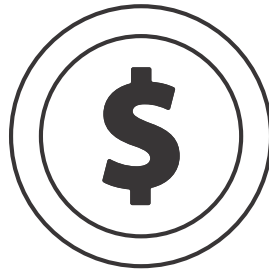
# Let's Go to the Credit Union!

Tony wants to make a deposit! Help him get to the credit union.



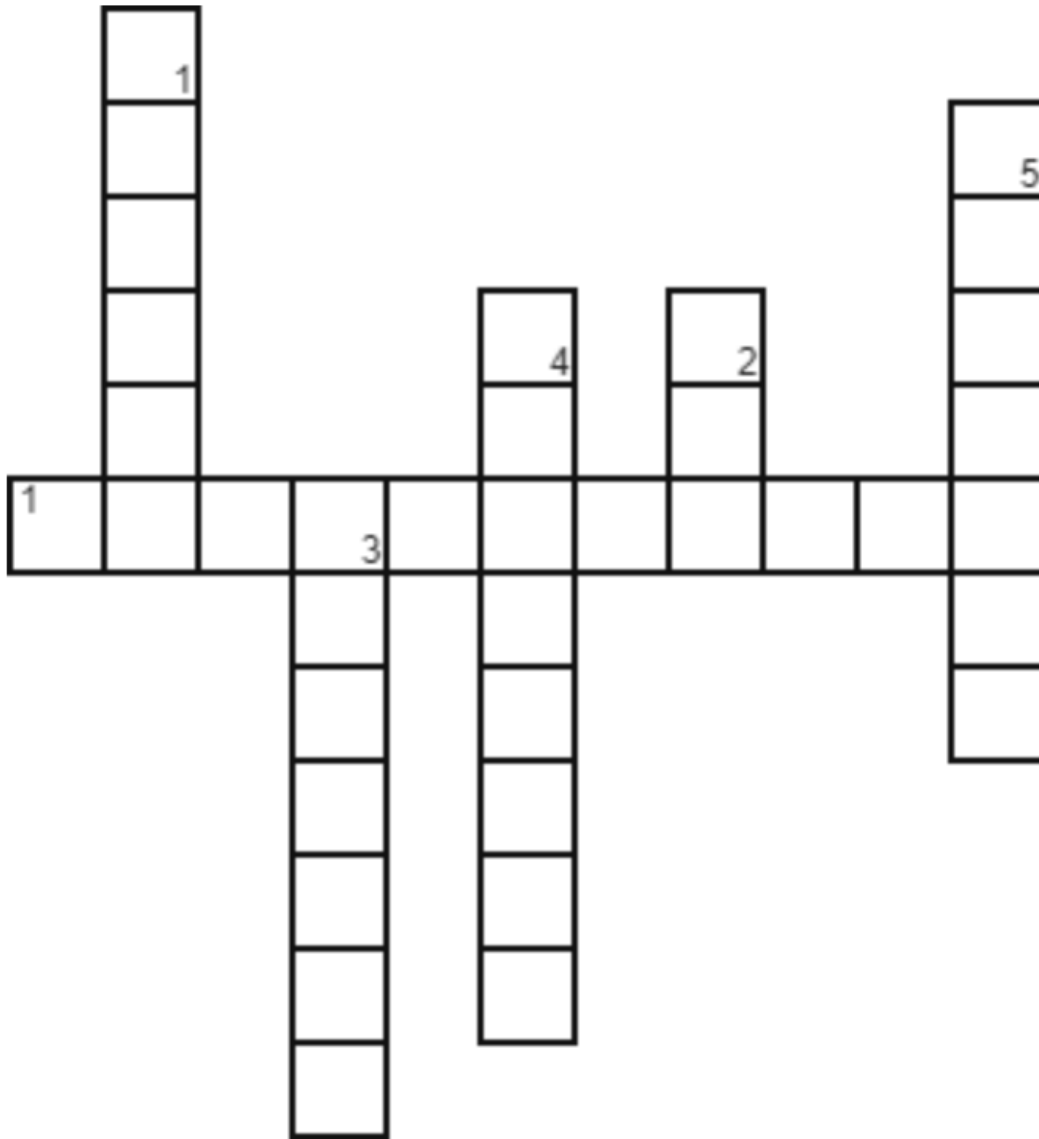
# Finish the Piggy Bank

Follow the alphabet A to Z to finish the piggy bank so you can save money for your next deposit!



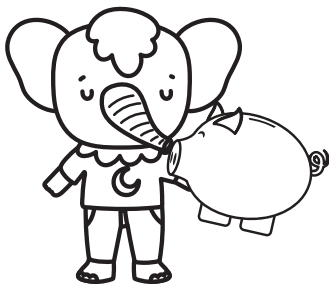


# Crossword



## Across

1. A safe place to keep your money!



## Down

1. When you join a credit union, you become this

2. Members \_\_\_ their Credit Union!

3. When you put money in your account.

4. When you take money out of your account.

5. It shows how much money is in your account.

# Check Your Balance!

Abby has a balance of \$25 in her account.

Her grandma gives her \$50 for her birthday.

She deposits it into her account on Monday.

On Tuesday she withdraws \$15 to buy groceries.

On Wednesday she withdraws \$10 to buy lunch.

On Thursday she deposits \$10 from her allowance.

How much is her balance now? \$\_\_\_\_\_

On Friday she wants to buy a birthday present for her friend. It will cost \$15.

She goes to an ATM to withdraw money.

What is her new balance? \$\_\_\_\_\_

